

Chehalis Basin Lead Entity

www.chehalisleadentity.org

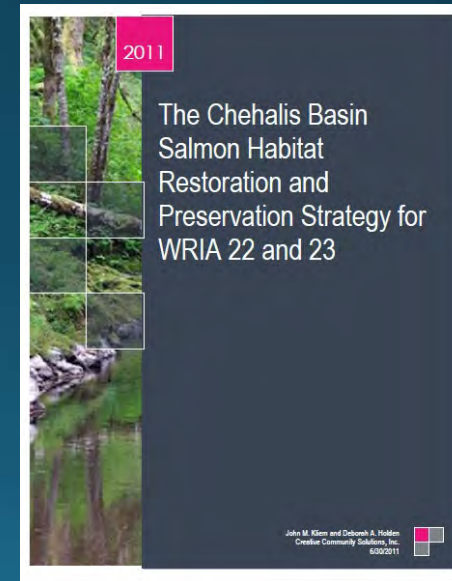
2019 SRFB Application Workshop

So you want to help salmon..Great!

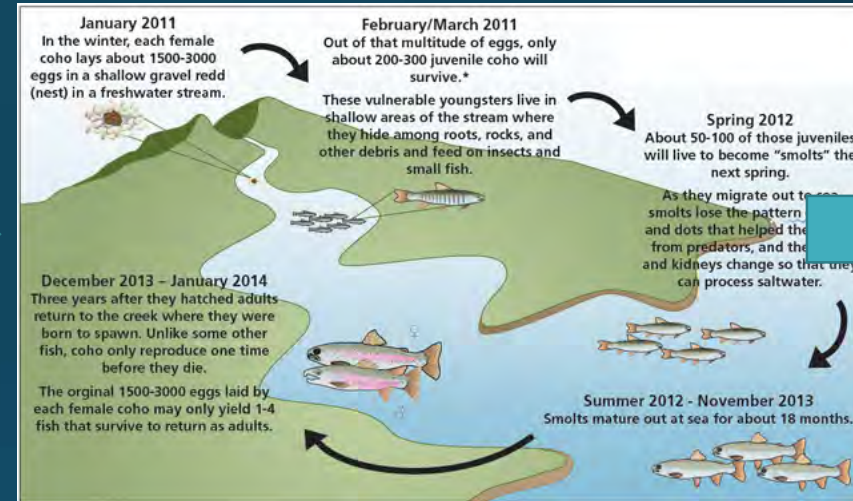


This presentation aims to help you develop a project that...

- Helps Salmon
- Meets the Goals for Salmon Restoration and Preservation in the Chehalis
- Supports Local Values

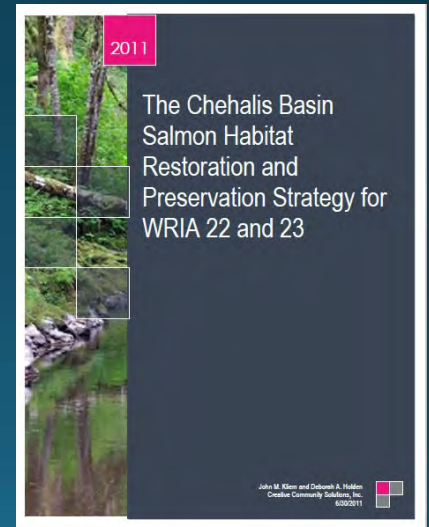


Project Development – *Where to develop a project?*

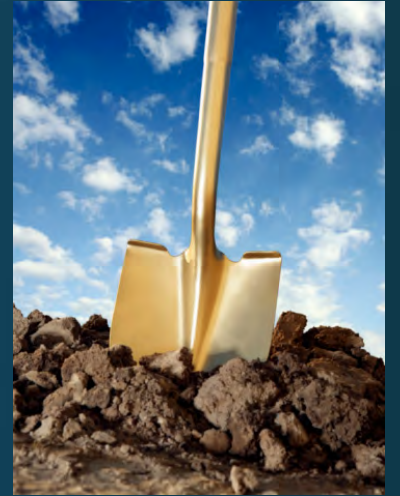


Checklist – *Should I develop this project idea further?*

- ✓ Benefits one or more salmonid species at multiple or critical life-stages
- ✓ Addresses a threat to salmon recovery
- ✓ Addresses a process-based impairment
- ✓ Addresses Tier 1 or Tier 2 concern as listed in the Lead Entity Strategy



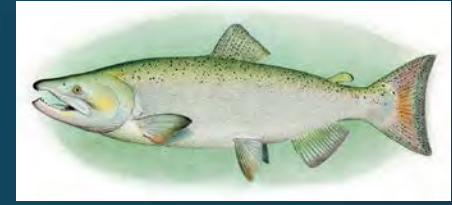
Once you're ready to write a proposal...



- *Here is some guidance on the harder-to-answer questions in the SRFB "Salmon Proposal" application form...*

Problem Statement

– why do the project?



- Focus on benefits to fish
 - ...Don't say the landowner wanted a new bridge
 - ...Don't say the culvert gets clogged
 - ...Don't say someone gave you money to come up with the idea
- What are the benefits to fish?



I need a
functioning
ecosystem....



Fish Resources

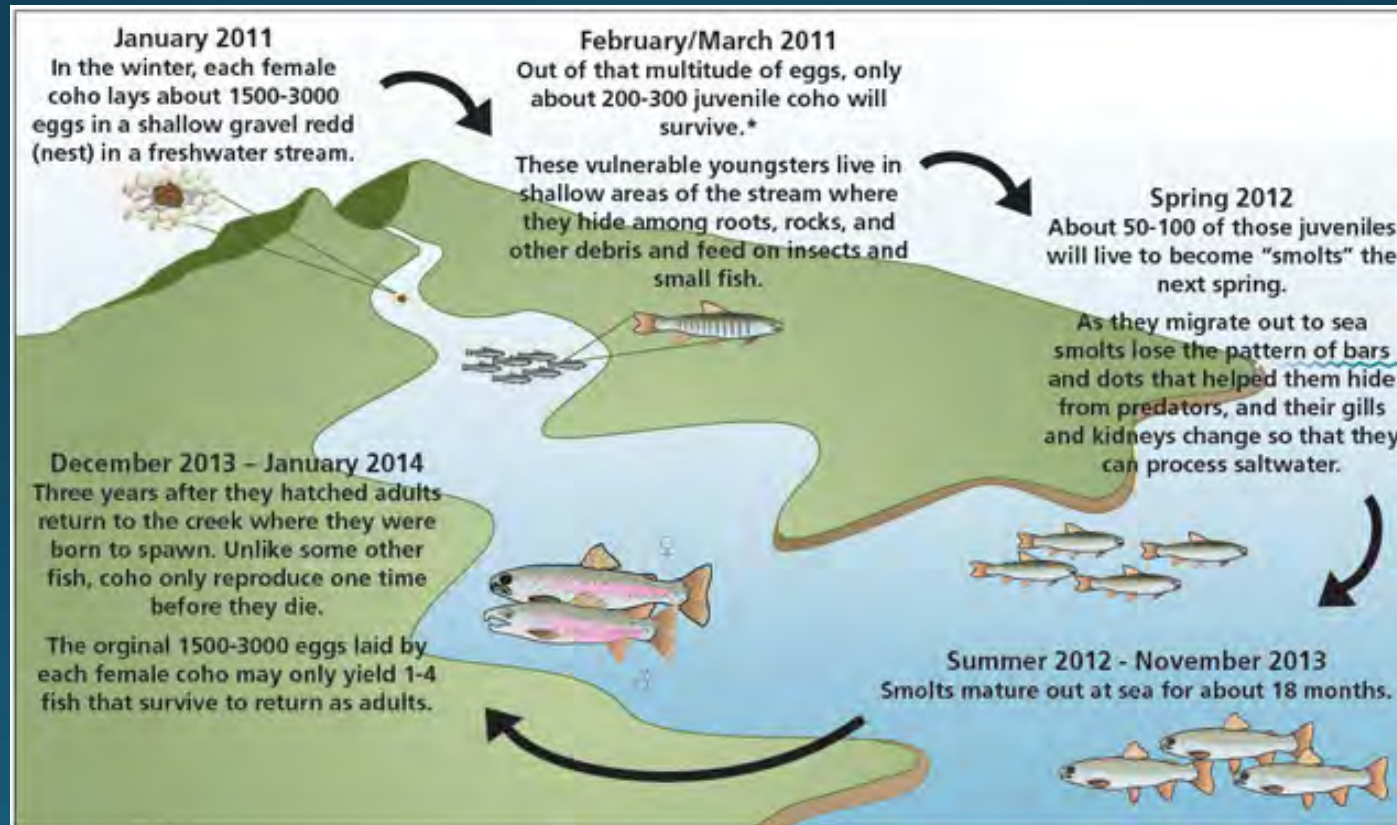


- How to answer the question: “Is the population declining, stable, or rising?”
 - WDFW data: Look at stock reports available on “Score” - https://fortress.wa.gov/dfw/score/score/maps/map_wria.jsp
 - WDFW Region 6 &... fish-biologist assessment
 - Other sources?
- Don't list Resident Cutthroat as a species benefiting. We don't count those.

~~Residents~~

Life Stages

- When in its lifecycle does each species use your project site?
- *Does that life stage actually benefit from your project?*



Now let's think about processes...



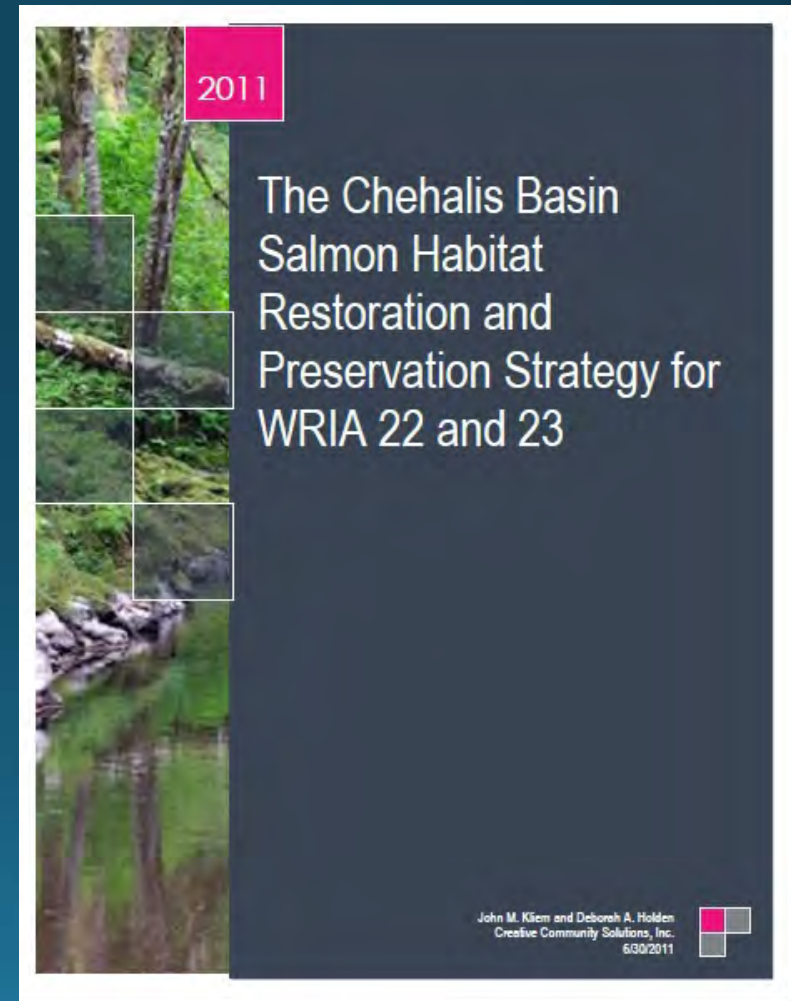
What process does your project improve?

- ☐ Hydrology
- ☐ Sediment supply
- ☐ Organic matter inputs
- ☐ Nutrient inputs
- ☐ Heat input
- ☐ Fish passage
- ☐ Wood recruitment
- ☐ Floodplain function

Hot Hint: The **Goal of your project needs to be to address an impaired process*

Limiting Factors

- Is the issue your project addresses a “Tier 1” or “Tier 2” concern in the subbasin?
- This information is provided in this document →
- Cite EDT results if desired



Limiting Factors by Subwatershed

Sub-Basin	Tier 1 Concern	Tier 2 Concern
Black River	Water Quality Riparian Water Quantity	Large Woody Debris Fish Passage
Boistfort	Fish Passage Sediment Riparian	Large Woody Debris Water Quality
Chehalis Mainstem	Riparian Sediment Fish Passage	Large Woody Debris Water Quality
Cloquallum	Fish Passage Riparian Water Quality	Floodplain Sediment
Grays Harbor Estuary Management Unit	Water Quality Total Estuary Habitat Loss	Exotic Species Sediment Tributary Connectivity/Surge P.
Hoquiam	Water Quality Fish Passage Riparian	Floodplain Sediment

Goals and Objectives

- Think outside the project box!





Goals

Life stage you are going to help/ at what time of year?

- Goal: "Achieve biological outcome _____ by remedying observed problem _____"

Process that is impaired (what is the root cause of the impairment? Will you address it?)

Objectives

~~Schedule~~

Link this to the goal. What life stage are you going to help, or process are you going to improve?

“Help _____ through _____ over _____.”

What is the action you will take?

A number! Area treated, miles opened up, landowners engaged, time period, etc.

Scope of Work

- Points given for clear, feasible scopes and schedules
- Provide a table*
- Mention permitting schedule
 - If you don't know the details, list what permits you will apply for and when you plan to apply for them

*

Deliverables	Time	Who Does It?

Assumptions and Constraints

- You are applying for a grant so it is obvious you need money. Don't say getting this grant is your main constraint.
- What else could happen that would keep your project from being successful? E.g:
 - Invasion by invasive species
 - Landowner changes mind and denies access
 - Partners drop responsibilities
 - Maintenance doesn't occur and plantings die
 - And yes, \$: Is your source of match secure?



Partnerships



- Include partnerships in implementation- E.G. - Provide technical support, advice, help with construction, etc.
- The following leads to *high* points in our ranking system:
“The project has documented multiple partners (3+) that understand their commitments throughout the life of the project and beyond.”



Focus - Barriers



- What is the barrier's rank on the WRIA 22&23 list?
 - Rank on County lists not used in evaluation
- What is it's PI? (if available)
- What is the % passability?
- What is the distance opened to the next upstream barrier?
 - None (o) if there is a downstream barrier
- Include barrier evaluation forms, if available



Additional components of a “Stand-Out” proposal

- Document scientific studies that point to need for project
- Use best available science to guide project development
- Address climate change adaptation

Supplemental Questions

The Chehalis is a special place!

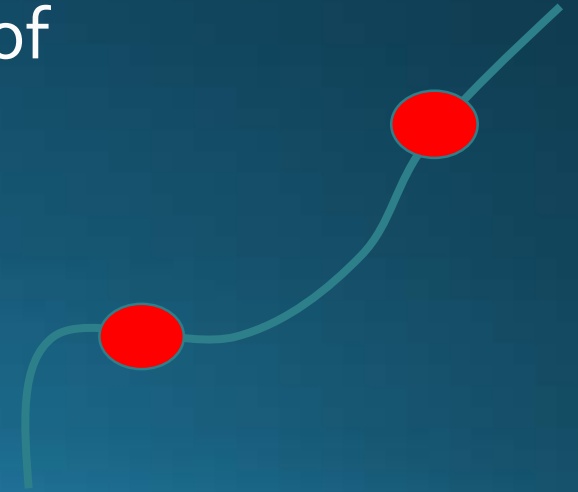
You will need to address these questions on a separate form in order to provide information to the Chehalis Basin Lead Entity.

Enter form as attachment type "Application Document"

Synergies



- Is there a near-by project that helps your project achieve greater benefits than if yours happened alone?
- Example nearby projects – RMAP, NRCS, FFFPP culverts, projects by other agencies...nearby land acquisitions by land trusts, monitoring that may help assess impacts of this project, etc.
- Projects completed within last (5) years – or part of simultaneous proposal
- Provide a map of the near-by projects



Community - Supplemental

- Landowner
 - Proposal acknowledges that landowners are informed of the risks associated with the project and are supportive of the proposal
 - Document evidence that there is permission to move forward (signed willingness form, or similar)



Community - Supplemental

Education & Outreach

- Be specific and detailed about any education components of your project, including:
 - Long-term education outreach program
 - Marketing (signs, social media)
 - Technology (video, web, distance learning),
 - On-site activities (hands-on activities, field trips, skill building)
 - Learning activities (citizen science, project-based learning, outdoor classrooms, landowner demonstration)



Community - Supplemental

Volunteer Labor

- High points if: “The project uses a large pool of volunteer labor from multiple age and socio-economic groups for monitoring and key construction components”
- Example of volunteers:
 - Grays Harbor Stream Team
 - Centralia Stream Team
 - Grays Harbor College Fish Lab
 - Boys & Girls Club
 - School Groups



Community - Supplemental

Local Support

- Agriculture, recreational, tribal, etc.
- Needs to be documented to receive full points, e.g:
 - Page reference from a local plan
 - Letter of Support
- Are the adjacent landowners on board as well as the directly impacted landowners?
- Are there any concerns in the surrounding community?



Community - Supplemental

- Examples of Local Support, cont...
 - Support by agricultural and recreation communities?
 - Generates economic benefits?
 - Increased public safety, decreased risk of property damage or improvements to physical infrastructure?
- If there is hesitation or concern – note this in your answer
- *Answer this questions with more than just: "the project will help salmon, and salmon are culturally important to tribes and economically important to commercial fisherman..."*



- See RCO Application Webinar Slides for more details on getting your application ready:
- <https://www.youtube.com/watch?v=O2Nxpp65AUg&feature=youtu.be>

Take it away Alissa!

