
**HABITAT WORK GROUP
FEBRUARY 10, 2012 MINUTES**

In attendance:

Lee Napier, Grays Harbor County Lead Entity Coordinator	Larry Durham, Chehalis Tribe
Bob Amrine, Lewis County Conservation District	Lonnie Crumley, Streamworks
Ann Weckback, Lewis County	Mark Swartout, Thurston County
Chanele Holbrook-Shaw, Heernett Foundation	Miles Batchelder, WCSSP
Chris Conklin, Quinault Indian Nation	Miranda Plumb, USFWS
Eric Delvin, The Nature Conservancy	Patrick Dunn Center for Natural Lands Mgmt.
Janel Spaulding, CBP Watershed Coordinator	Rob Fancher, Rayonier
Jamie Glasgow, Wild Fish Conservancy	Debbie Holden, CCS
Kat Moore, RCO	

AGENDA

1. LOCATION:

Lewis Conservation District Office
1554 Bishop Road
Chehalis, WA

2. WELCOME AND INTRODUCTIONS

3. CONCEPTUAL PROJECT PRESENTATIONS AND DISCUSSION

- Rob Fancher, Rayonier
- Jamie Glasgow, The Wild Fish Conservancy

4. SRFB CYCLE FOR 2012

- Present List of Projects entered into HWS by February 10, 2012 deadline
- Discuss Ranking Process-scheduled for July 13, 2012.

5. AGENDA FOR NEXT MEETING MARCH 9, 2012

WELCOME AND INTRODUCTIONS

Bob Amrine, Chair, called the February 10, 2012 meeting of the Habitat Work Group to order.

CONCEPTUAL PROJECT PRESENTATIONS AND DISCUSSION

ROB FANCHER, RAYONIER

Culvert Correction Projects

1. Campbell Slough

This project will provide fish passage for 6 blockages. Handouts with maps and information were provided.

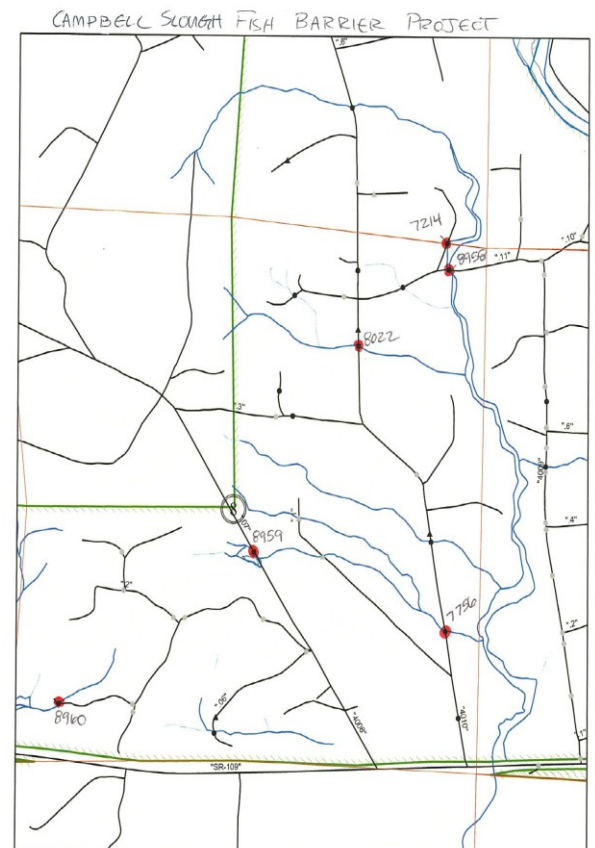
Five of the projects are identified in RMAP as having to be replaced; one is an orphan which hasn't been used since 1984.

Culvert 8958 was identified by SHIAP as barrier. It has a railroad grade and a pond formed. We will remove the railroad fill which is 10"-18" high. We considered keeping the pond but there's water perking underneath the railroad fill and we have no control over what's coming through the fill. (The project is just past the Humptulips bridge near a recent clearcut).

Culvert 8960 which is a newer installation of 36" plastic pipe. This culvert will be a pullout because we discovered this is a fish stream. Culvert 8959 has already been pulled, we've pulled 2 crossings on that road.

Discussion: The bridge will probably be precast concrete. The budget is low because Rayonier owns both sides. Rayonier will provide a 35% match.

Lonnie's Chenois Creek project is about 1/2 mile downstream. Rayonier will partner with the Chehalis Basin Fisheries Task Force. It is not known if these culverts are on the Ranking.



2. Chenois Creek Fish Barrier Project

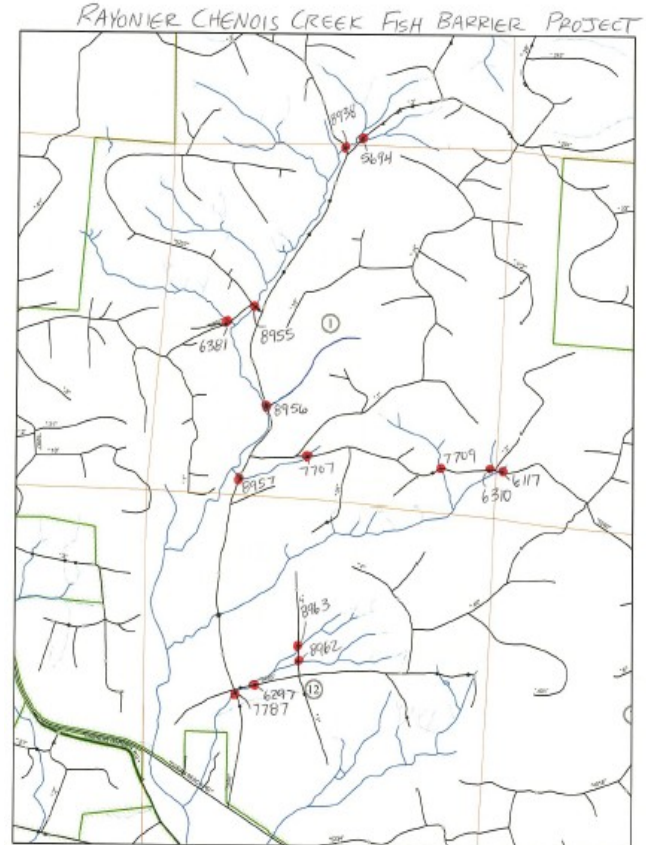
This project will correct fish passage barriers to 14 road crossings which include culverts, bridges, pullouts. Handouts with maps and information were provided.

Most of these are standard. Two are on the mainstem, 8955 where the bridge is, and 8938. At the road junction there's a curve; we might be able to put a larger culvert there.

Discussion:

Will partner with the Task Force. There are a lot of RMAP pipes to replace before the deadline and it works best for Rayonier to treat an area or road system, finish one area at a time.

The cost of \$178 for the entire watershed is low because Rayonier has their own engineers and contractors which saves them money.



JAMIE GLASGOW – WILD FISH CONSERVANCY

1, Allen Creek, Black River Basin

Maytown Exit, the project can be seen from I-5. Drains Scott Lake and Deep Lake. Quinault and Thurston Conservation District (Mike Kuttle, Jr.) suggested this project.

Allen creek is in a 1600' long ditch along Case Road and runs into Beaver Creek. There's a relic channel that runs on the Rexius Property. There's a crossing under I-5 which is 100% passable. The Wild Fish Conservancy wants to restore channel into relic channel.

Discussion: Comparison to the Department of Ecology Study on Integrated Ambient Monitoring (Indian Creek, City of Olympia). Allen Creek is an opportunity to move a stream away from a road to improve water quality for fish.

The stream will be restored to its historical location, a riparian corridor will be planted along the stream, the large wood added to the system. There are no known barriers downstream or upstream.

Discussion about fish species in the stream: The Wild Fish Conservancy has documented cutthroat, rainbow and mud minnow. Multiple species stand to benefit from this project and there's great potential to improve habitat and water quality.

Discussion about gravel: There's material available, they're planning on adding complexity to the system.

We're estimating cost of project with assistance promised by landowner for about \$100,000 and have asked US Fish for one-half of that. The project is very visible and would be a good demonstration project.

2. Watertyping

Beaver Creek

The Wild Fish Conservancy will be focusing field efforts in the coming months on Beaver Creek to supplement work done on Allen Creek. They have an agreement and are ready to go but need advice on where the work should occur. They are looking for locations with unclassified creeks, moderate development with more anticipated, so they can get streams on map correctly before permits and changes are made. Multiyear project, will be in the field next 2-3 years running March through June.

They have identified 2 potential watersheds.

"A"

Powerline Road

This is a low gradient, low topography area.

The stream runs both directions, to the south and to the north (Chris).

"B"

Mima Mounds

Politically sensitive because of gravel mine. Contentious in mind of County (is there really a creek there and why is there a gravel mine where's a creek). Patrick offered some funding for a project in this area if it can be done quickly – on WDFW land. There are fish in the stream.

After discussion, the group recommended the "A" area near Powerline Road.

Jamie, will plan on doing permissions on area A and see what can be done without permissions.

3. Grays Harbor Fish Use Assessment

The Wild Fish Conservancy has uploaded to PRISM the Tier-1 projects. Would like to give a presentation of their findings at the next meeting.

HWS CONCEPTUAL PROJECT

Lee provided a handout of all conceptual projects that are loaded on the HWS. The following projects appear to be ready to go:

24-2011	Allen Creek Restoration Project 06/01/2012 \$112,500.00
21-2011	Bunker Creek Barrier Removal Project 01/31/2010 \$76,000.00
5-2012	Bunker Creek Barrier Removal Project MP 5.678 01/01/2013 \$150,000.00
7-2012	Bunker Creek Road MP 2.386 Barrier Removal Project 01/01/2013 \$90,000.00
10-2012	Campbell Slough Fish Barrier Project (6 corrections) 01/01/2013
6-2012	Ceres Hill Rd 09.56 Unnamed Creek Barrier Removal Project 07/15/2014 \$90,000.00
1-2012	E. Fork Chenois Creek Fish Barrier Correction 01/01/2014
25-2011	Elliott Slough Acquisition 03/30/2012 \$522,860.00
20-2011	Mill Creek Dam Removal 01/31/2012
9-2012	Rayonier Chenois Creek Fish Barrier Projects (14 corrections) 06/30/2013
2-2012	W. Fork Chenois Creek Fish Barrier Culvert Correction 01/01/2013
3-2012	Wein's Farm Riparian Acquisition & Restoration 06/30/2012

Should the group invite these projects to apply? The site visits are in May (10 and 11) and prior to that site visit with the SRFB review panel, draft project applications projects must be entered into PRISM. We'll invite people to talk about their projects in March, and they would have from March 15th until April 20th to enter draft application information into PRISM. Should we tell these people to go ahead and make their application? Group consensus (yes).

Discussion by Kat:

Lee's going to be our test project for moving projects from HWS into PRISM. Once the projects are moved from HWS, PRISM will assign a number and at that time everyone can start entering their information into PRISM.

The design process is set forth in the updated Manual 18, and it's okay to stray from the design process if you have your own, but we need to know what level of design you're doing and if you're using professional engineers.

The Land Certification Form is required. Restoration sponsors will sign to acknowledge they've discussed the project with landowner and there aren't any title defects on the property (i.e., power line easement or road easement). This is due before getting funded; pulling title reports are pre-contract tasks now.

RANKING PROCESS

Lee provided handouts for the ranking process and reminded the HWG how the process works.

In years past, the group collectively reviewed and ranked projects. This approach works best if one of the review team members facilitates the discussion of the strengths and weaknesses of the project. If there are concerns about a project it's a great time to bring up the concerns – Lee can contact the project sponsor during the review to resolve the concerns, if possible, prior to

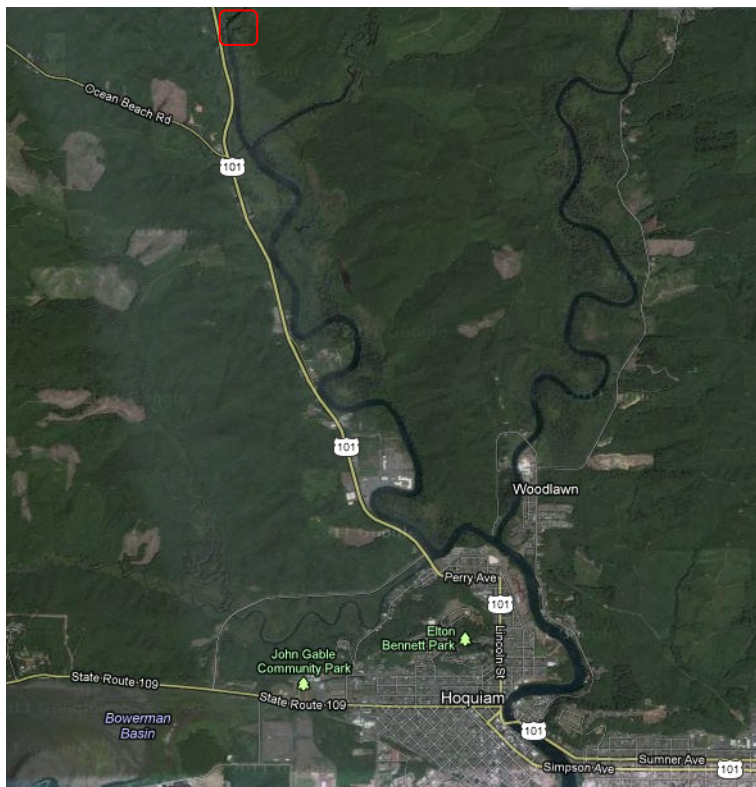
the final ranking. At the end of the day the group has a ranked project list that the group discuss and then advance as a recommendation to the Lead Entity for submission to SRFB.

Kat provided a message from Janet Strong:

Janet is working with City of Hoquiam to clean up an access point and is looking for people to help manage. The property is a tiny water park off 101 with boulders prohibiting driving onto the site. It was a property that Rayonier owned and maintained. There's a picnic area and there used to be a gazebo but it has been removed.

Janet wants to fix up the pull-in area, add signage and do outreach. It is conserved in partnership with timber companies and state agencies.

Directions: Green Bank Park is along Hwy #101 across the road from the City of Hoquiam's gravel pile, about 3/4 mile north of where the Ocean Beach Rd. turns off Hwy #101, and 1/2 mile south of where the highway crosses the Hoquiam River, about 3.5 miles north of the city. There is a little pull-off and big rocks block vehicle access.



NEXT MONTH

Chanele and Bob Amrine will give project updates.

Lee will let the sponsors of the 12 proposals know to keep moving forward and see if any of them want to talk about their projects.